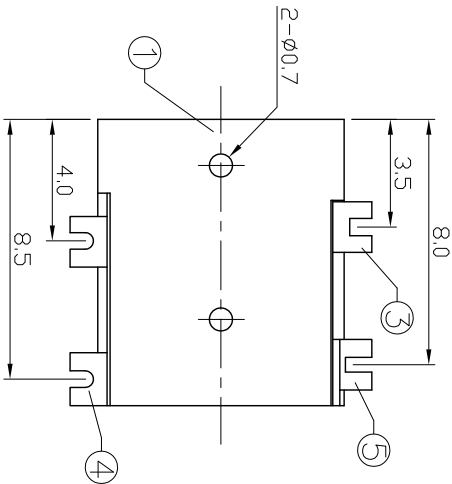
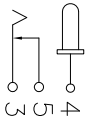


SCHEMATIC



PIN	φ1.0	φ1.3	φ1.65
APPD.		✓	

SPECIFICATION

1. Rating : DC 30V 0.5A;
2. Contact resistance: ≤0.03Ω;
3. Insulation resistance: ≥100MΩ (DC250V);
4. Withstand voltage: 500VAC ;
5. Insertion and extraction force: 3-20N;
6. life test: 5,000 cycles。

5	CURVE PIECE	1	BRASS	Ag-Plating
4	CONTACT FOOT	1	BRASS	Ag-Plating
3	SPRING	1	BRONZE	Ag-Plating
2	PIN	1	BRASS	Ni-Plating
1	HOUSING	1	LCP	
NO.	DESCRIPTION	QTY	MATERIAL	PLATING

UNIT: MM	TYPE:	MODEL NO:	PAPER NO:	PAGE 1 OF 1
			TOLERANCES	SCALE
			±0.15	4:1
			ANGLES	VER
			±1.5°	1

DESIGNER	
----------	--

MRK-DC00-033-0017
 深圳市迈瑞康电子有限公司