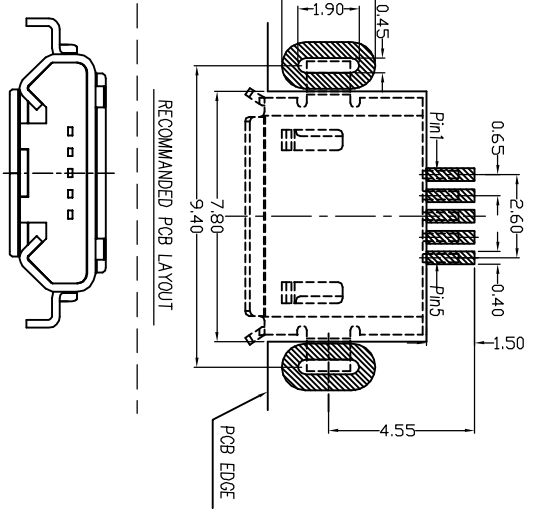
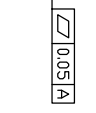
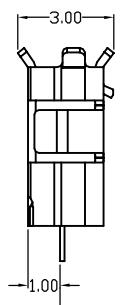
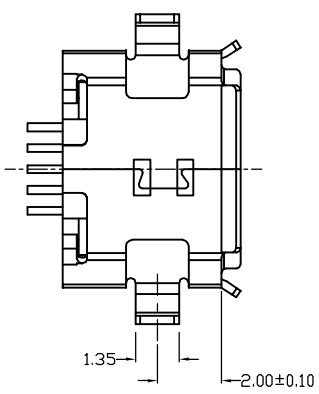
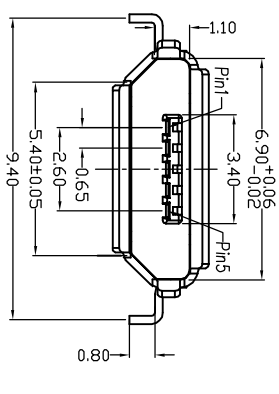
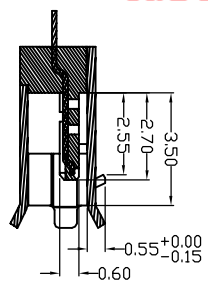
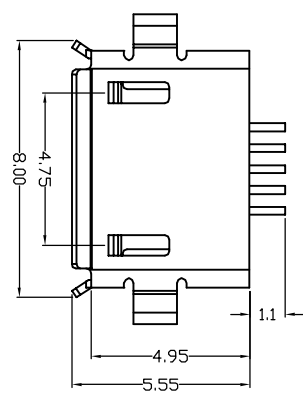


1 2 3 4 5 6 7 8

| REV. | EQU NO | LOCATIONS | DESCRIPTION | DATE | REVISER | APPD |
|------|--------|-----------|-------------|------|---------|------|
| REV | EQUINO | LOCATIONS | DESCRIPTION | DATE | REVISER | |



Note:

1. Material:
 - 1.1 Housing: High temperature thermoplastic with g.f.i,UL94v-0
 - 1.2 Contact: copper alloy,t=0.20mm
 - 1.3 Shell: copper alloy,t=0.25mm
2. Specification:
 - 2.1 Current rating: 1 A Max.
 - 2.2 Dielectric withstanding voltage: 100 V(ac) for 1 min.
 - 2.3 Contact resistance: 50 mΩ Max.
 - 2.4 Insulation resistance: 100 MΩ Min.
 - 2.5 Total mating force: 3.57 Kgf Max.
 - 2.6 Total unmating force: 1.0 Kgf Min.0.81~2.05 Kgf Min.after 10000 insertion/extraction cycles
 - 2.7 Temperature range: -30°C~80°C

| Part No. | Name | Qty | Finish |
|----------|---------|-----|--------|
| 3 | Shell | 1 | N/A |
| 2 | Contact | 5 | N/A |
| 1 | Housing | 1 | N/A |

| PART NO. | PARTNO. | MATERIAL | MATERIAL |
|-----------------------|---------|----------|----------|
| MODEL NO: | MOLDNO. | FINSH: | FINISH |
| UNIT: | SIZE: | COLOR: | COLOR |
| TOLERANCE UNSPECIFIED | | | |
| .x | .X | | |
| .xx | .XX | | |
| .xxx | .XXX | | |
| ANG. | ANG. | | |

| DR: | CHK: | APP: | SCALE: | DWG NO: | SCALE: | SHEET: | REV: |
|-----|------|------|--------|-------------------|--------|--------|------|
| | | | | MRK-MU09-940-0020 | | | REV |

深圳市迈瑞康电子有限公司

F E D C B A 1 2 3 4 5 6 7 8