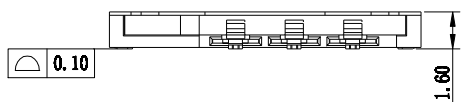
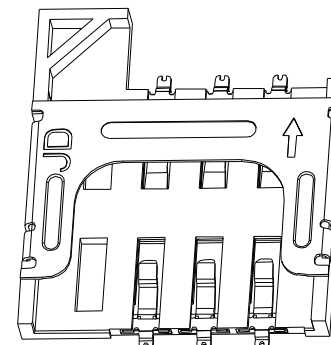
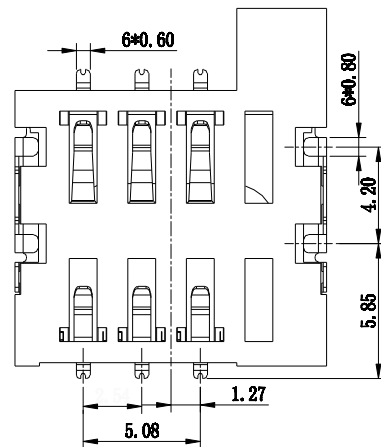
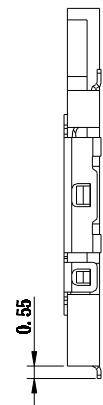
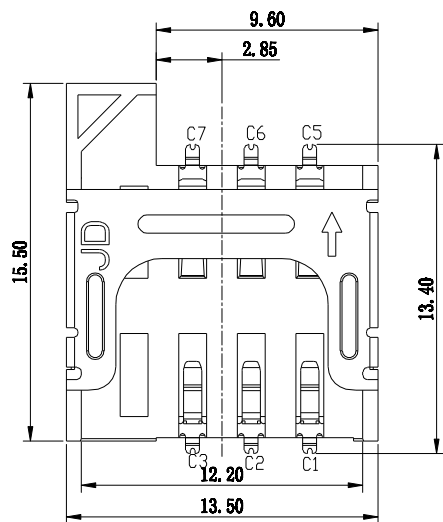
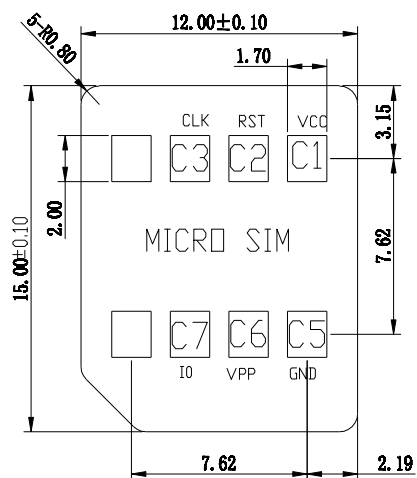


REV.	DESCRIPTION	APPD	DATE



SIM Card Pin Assignment

Pin No.	Name
C1	Vcc
C2	RST
C3	CLK
C4	Rrserved
C5	GND
C6	Vpp
C7	I/O
C8	Reserved



NOTES:

1. MATERIAL:

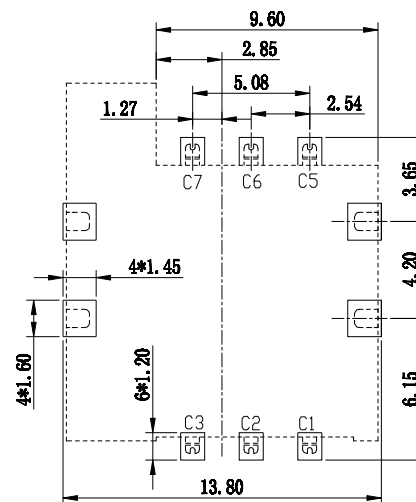
- HOUSING MATERIAL: THERMOPLASTIC UL94V-0; COLOR: BLACK
- CONTACT MATERIAL: COPPER ALLOY, T=0.15mm
- SHELL MATERIAL: STAINLESS STEEL, T=0.16mm

2. FINISH:

- CONTACT FINISH: 50u" MIN. NICKEL UNDER PLATED, PLATED 1u" Au ON CONTACT AREA ; PLATED GOLD FLASH ON SOLDER AREA.
- SHELL FINISH: 50u" MIN. NICKEL UNDER PLATED, PLATED GOLD FLASH ON SOLDER AREA.

3. ELECTRICAL SPECIFICATIONS:

- VOLTAGE RATING: 12 VAC
- CURRENT: 1 AMPERES MAX. PER CONTACT
- OPERATION TEMPERATURE RANGE: -25°C ~ +70°C
- CONTACT RESISTANCE: 60M Ω MAX.
- INSULATION RESISTANCE: 1000M Ω MIN.
- DIELECTRIC WITHSTANDING VOLTAGE: 500V AC FOR 1 MINUTE
- MAX. PROCESSING TEMP: 260°C for 30 SECONDS



PCB LAYOUT  
TOLERANCE: ±0.05

PART NO:		MATERIAL:		深圳市迈睿康科技有限公司	
LOT NO:		FINISH:			
UNIT:	MM	SIZE:	A4	COLOR:	TITLE:
TOLERANCES: X.X=?..35 X.XX=?..25 X.XXX=?..15		GENERAL ANGLE: X.X=?..0' X.XX=?..0'		DR:	2016-11-20
APP:		wenchangyong		CHK:	
SCALE:		1:1		DWG NO:	MRK-SM00-150-0011
SHEET:		1 OF 1		REV:	B/0