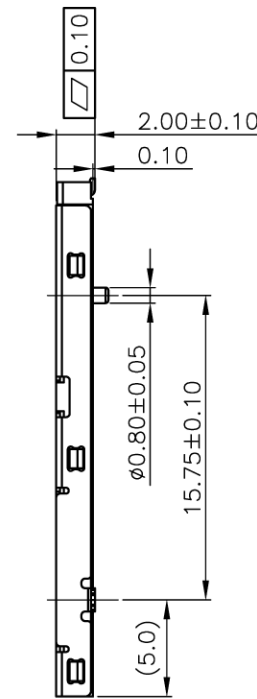
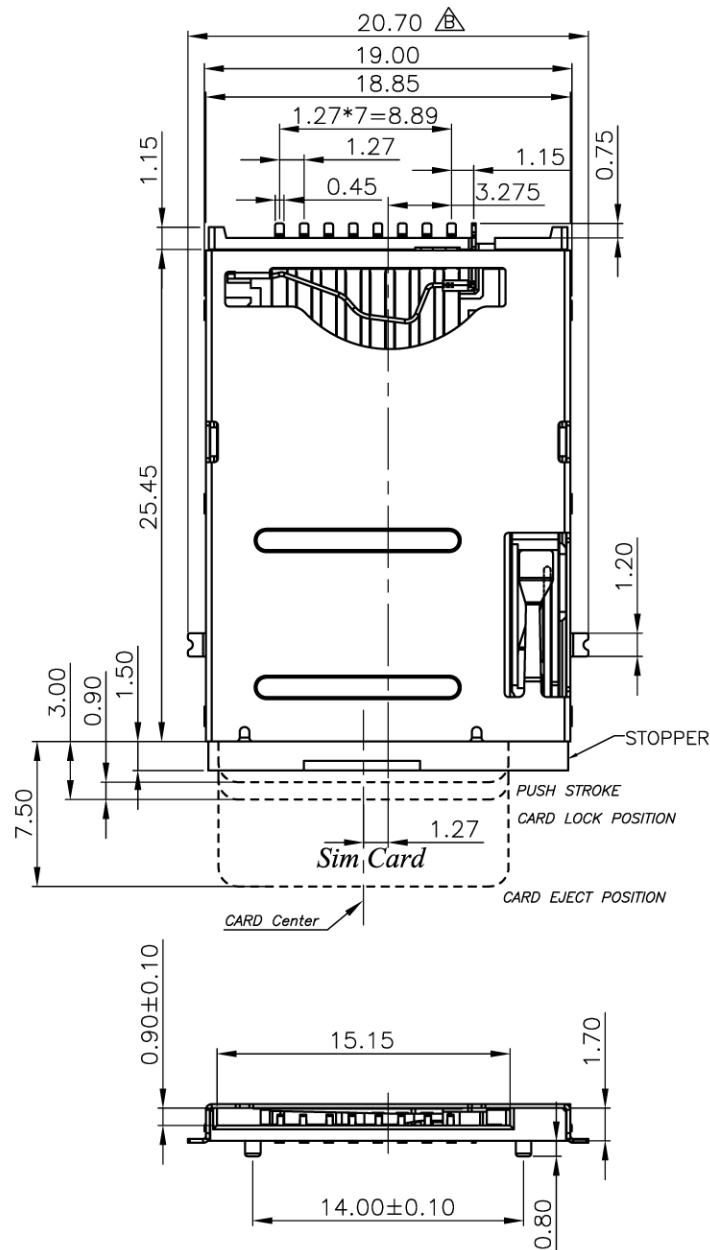


SYM	ECN
A	
B	

SHELL及上壳结构变更

US:03.00



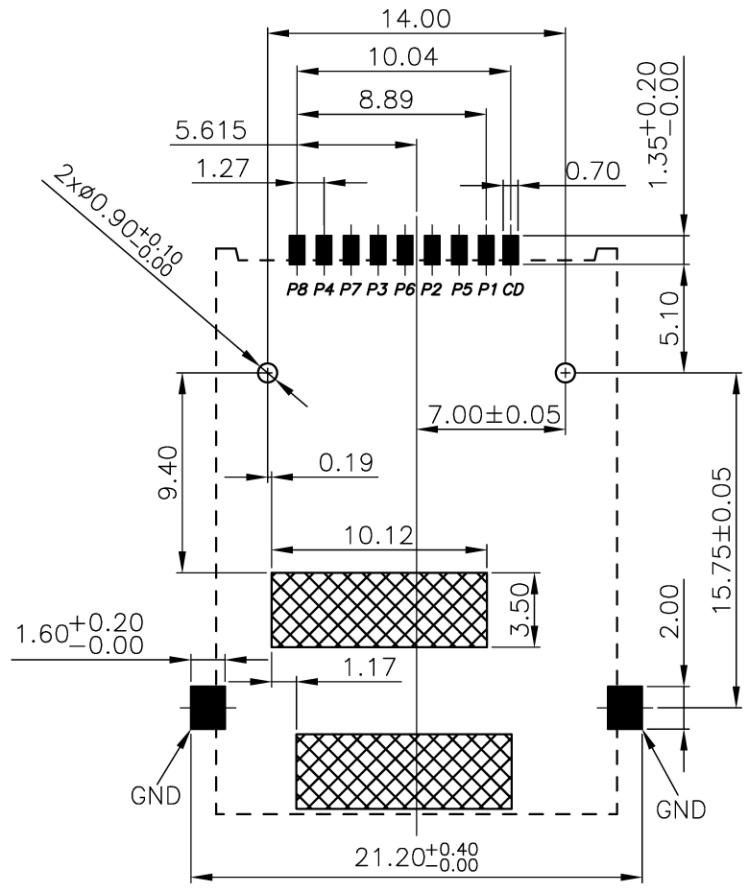
Specification

- * Electrical Characteristics :
 - Current Rating:0.5A.
 - Withstanding Voltage:AC500V r.m.s.
 - Insulation Resistance:1000Megohms Minimum at DC 500V.
 - Contact Resistance:100Miliohms Maximum.
 - *Mechanical Characteristics:
 - Mating Cycles: 5000 Insertions.
 - * Environmental :
 - Operating Temperature:-40°C to +60°C.
 - * Material:
 - 1.Housing:HI-Temp plastic UL 94V-0 Rated.
 - 2.Contact:Copper Alloy.
 - 3.Shell:Copper Alloy.
- Can accord with management standards for "environment-related substances to be controlled"
- Ordering Information

DRAWN		深圳市迈瑞康电子有限公司			
CHECKED		TITLE		PART NO.	
APPROVED		SIM_(8P TYPE)		MRK-SM05-200-0003	
				DRAWING NO.	
	UNIT	TOLERANCE		SCALE	SHEET
	MM	.XXX±.10, .XX±.25, .X±.38 ANG±3°		1:1	10F2
		SIZE	REV.		
		A4	B		

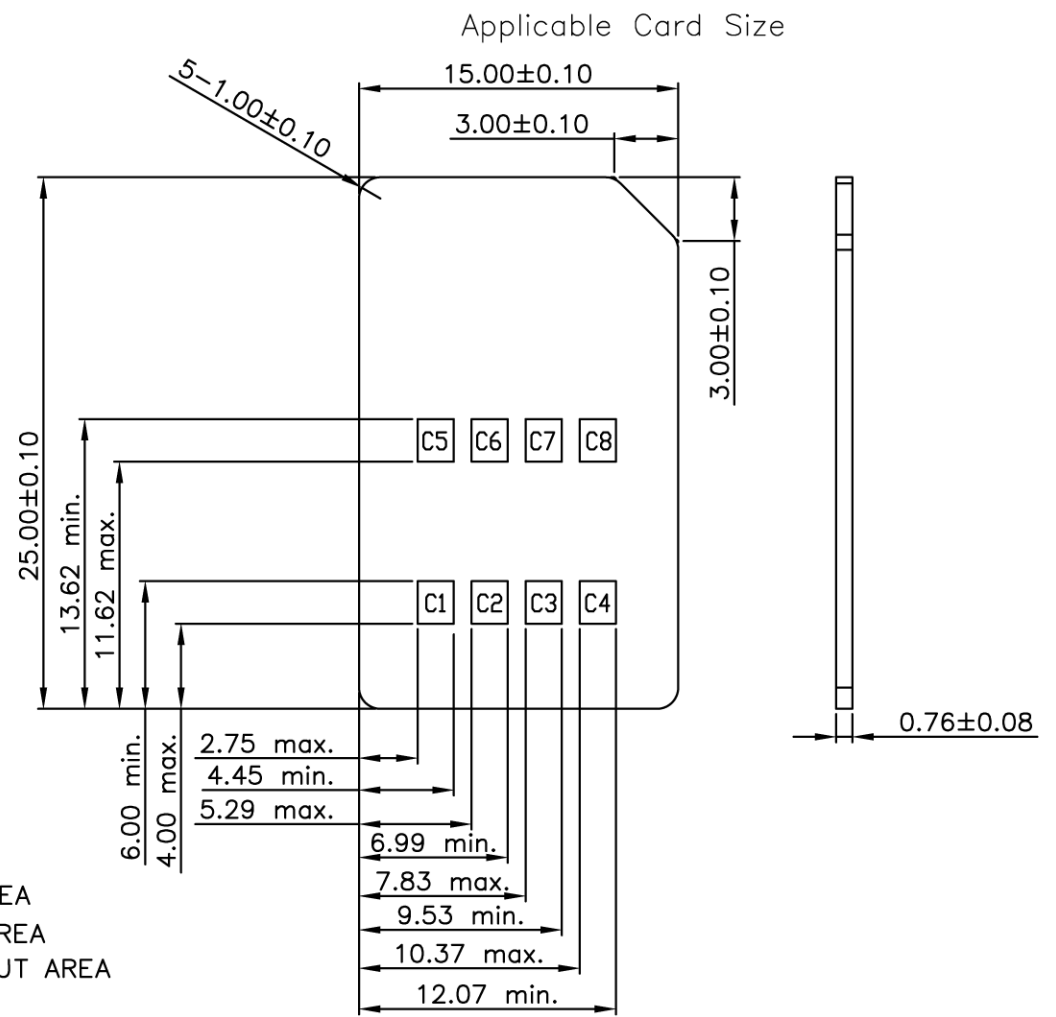
SYM	ECN
A	
B	

SHELL及土体结构变更 US.A3.30

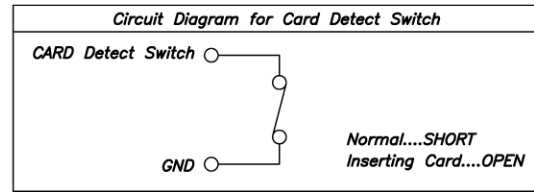


P.C.B LAYOUT
 TOP VIEW(General Tolerance±0.05)

PAD AREA
 KEEP AREA
 KEEP OUT AREA



Connector terminal NO.	Pin NO.
Pin 1	VCC:PWR signal and GND
Pin 2	RST:Reset signal
Pin 3	CLK:Clocking signal
Pin 4	Reserved
Pin 5	VCC:PWR signal and GND
Pin 6	VPP:Porgramming Voltage
Pin 7	I/O:Serial date input/output
Pin 8	Reserved



DRAWN	深圳市迈瑞康电子有限公司			
CHECKED	TITLE	PART NO. MRK-SM05-200-0003		
APPROVED	SIM_(8P TYPE)	DRAWING NO.		
UNIT MM	TOLERANCE .XXX±.10, .XX±.25, .X±.38 ANG±3°	SCALE 1:1	SHEET 20F2	SIZE A4
			REV. B	